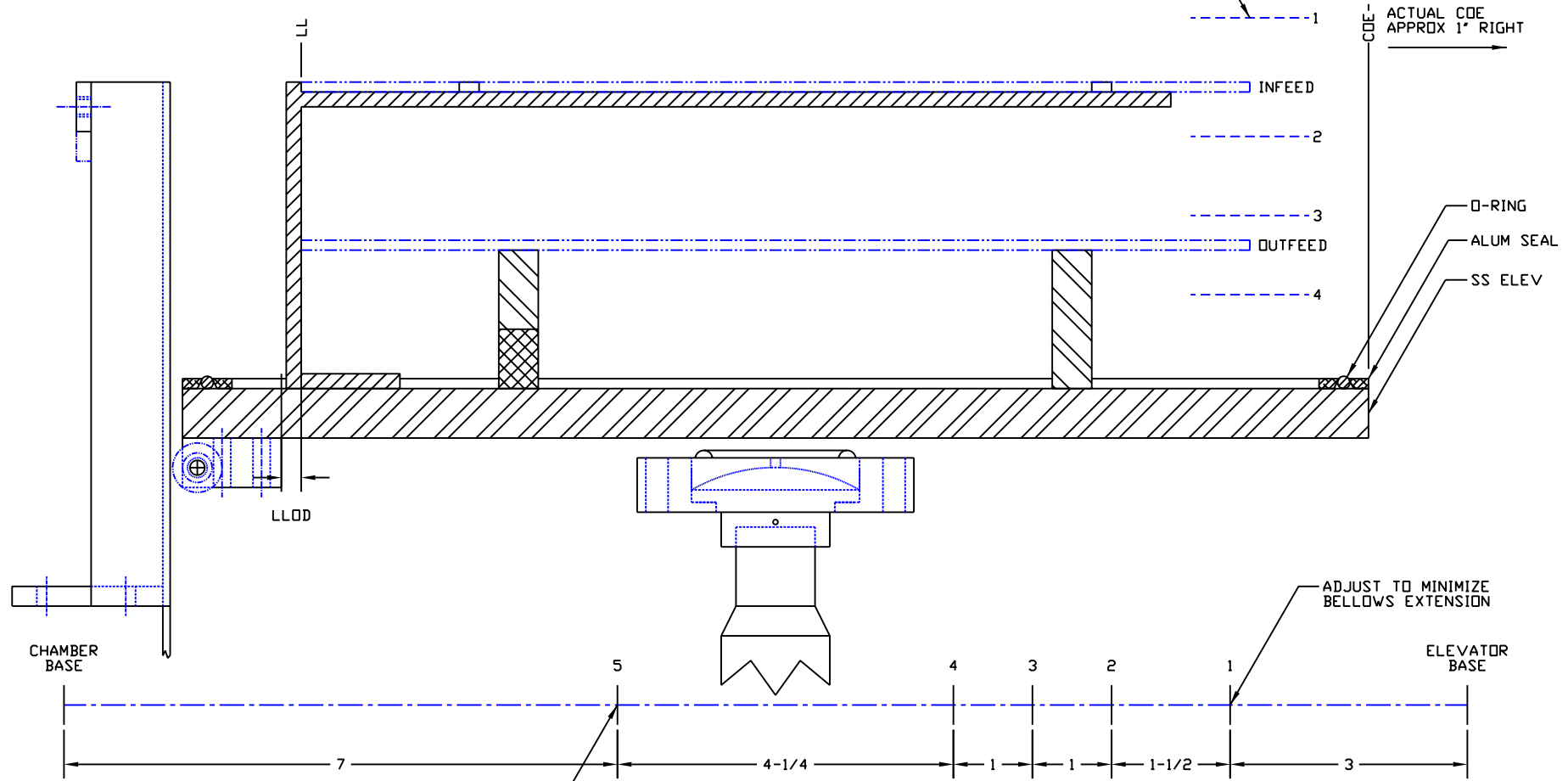


USED ON: HYD

REVISIONS				
ZONE	LTR	DESCRIPTION	DATE	APPROVED
-	A	REVISE DIMENSIONS	02JAN07	MML
B4	B	ADD EROLLER	17JUN07	MML

APPROX CARRIER TOP LEVEL WHEN AT INDICATED STATION



ADJUST TO 1/8" BELOW SEAL PLATE

APPROXIMATE ELEVBRKT LOCATIONS TO TOP OF ANGLE W/ 1/4" FLAG SHOWN ROTATED 90° FOR CLARITY

ADJUST TO MINIMIZE BELLOWS EXTENSION

ID	QTY	PART NUMBER	DESCRIPTION
4	1	PALLET	ASSY, PALLET SENSE
3	2	EGUIDE	ASSY, GUIDE, ELEVATOR
2	1	EPUSH	ASSY, PUSH ROD, ELEVATOR
1	1	ELEVATOR	PLATE, BASE, ELEVATOR

UNLESS OTHERWISE SPECIFIED DIMENSIONS ARE IN INCHES. TOLERANCES ARE:
 FRACTIONS -- ANGLES --
 3 PLACE DECIMALS --
 2 PLACE DECIMALS --
 DO NOT SCALE THIS DRAWING
 MATERIAL:

CONTRACT NO.	
DRAWN	M. LAMBERT 01 JAN 07
CHECKED	
APPROVED	
APPROVED	

MAT-VAC TECHNOLOGY, INC.
 POB 2299 - DAYTONA BEACH, FL
 COPYRIGHT 2007 - MAT-VAC TECHNOLOGY, INC.

**9X ELEVATOR
 SIDE CUTAWAY**

SIZE C	DRAWING FILE ELEV SIDE	REV B
SCALE NONE	RELEASE DATE	SHEET 1 OF 1